

MEP Innovation Conference

January 24-26, 2022

Tampa, FL

Tampa Marriott Water Street

MCAA



MCAA/MSCA Registration

NECA Registration

SMACNA Registration

Powered by:



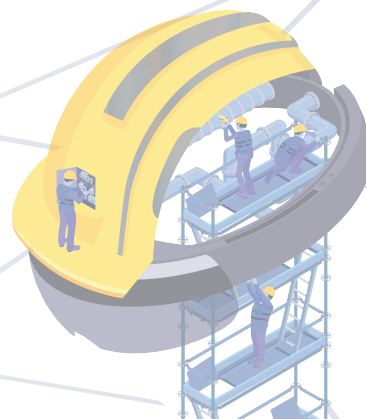
Monday, January 24

Pre-Conference Sessions

1:00pm - 1:45pm	Leveraging Data & Analytics to Optimize Your Existing Workforce	Eric Tucker, Procore Brian Witt, LaborChart Gary Fuchs, LaborChart
	Tips & Tricks with Robotic Total Stations	Bryan Williams, Trimble
1:00pm - 2:45pm	Low Code/No Code Solutions for VDC	Jeff Elwell, E.M. Duggan Inc.
1:00pm - 3:45pm	Software Selection Boot camp	Jeff Sample, Join
	Lean Into Operational Excellence	Amanda Comunale, AJC Consulting
2:00pm - 2:45pm	Future Jobsite - Cutting the Cord & Combustion	Kevin Gee, Milwaukee
	Tips & Tricks with 3D Scanners	Bryan Williams, Trimble
3:00pm - 3:45pm	Your Construction Data is Like a Social Network	Jake Olsen, DADO
	Technology to Track Your Assests	Andy Lambert, Milwaukee
	Model to Machine - Automate Spooling in the Cloud and Work Packaging	Britton Langdon, MSUITE
	Construction Robotics Hands-On with Spot	David Burczyk, Trimble

Opening Sessions

4:00pm - 4:45pm	Opening General Session - Part 1 Welcome to MEP & Leading with Innovation Panel	Stacy Zerr, The Waldinger Company Armand Kilijian, MCAA Kirk Davis, NECA Al Labella, SMACNA Lawrence Smith, Trimble
4:45pm - 5:30pm	Opening General Session - Part 2 Machine Learning & Artificial Intelligence Being Used on the Jobsite Today	James Benham, JBKnowledge Lindsey Miller, Document Crunch Josh Kanner, New Metrex David Burczyk, Trimble
5:30pm - 7:30pm	Exhibit & Reception	



Tuesday, January 25

8:00am - 9:00am Breakfast

9:00am - 9:45am General Session - How Data is Used Downstream

Joseph Lansdell, Poynter
Ron Bailey, NECA
Chris Pepler, Trimble

Breakout Sessions

10:00am - 10:45am 1.1 - Introduction to Data Management & Digitization

Jared Christman, Big State Electric
Travis Voss, Helm Mechanical
Matt Lamb, Rosendin

1.2 - Managing a VDC Department

Doug Smith, DSI
Adam S. Davis, Lighthouse Electric

1.3 - Training for Technology

Stephan Schnell, UA Local 467 Training Ctr.
Marty Riesberg, electrical training ALLIANCE
Ronald T. McGuire, International Training Institute

1.4 - Evolving Your Fabrication Shop Into a Manufacturing Facility

Amy Marks, Autodesk

1.5 - Roundtable: Project Coordination Across Trades

Stacy Zerr, The Waldinger Company
Todd Byxbe, Miller Engineering
Jeffrey A. Fuentes, Aurora Electric Inc.

11:00am - 11:45am 2.1 - Introduction to Project Management Software

Travis Voss, Helm Mechanical
Zach Piercy, Poynter
Brian Russ, Allison-Smith

2.2 - Design to Fabrication Through Digital Integration

Jeff Miller, Harrell-Fish Inc.
David Derocher, Trimble
Britton Langdon, MSUITE

2.3 - Understanding the Importance of Master Service Agreements

Adam Handfinger, Document Crunch
Lindsey Miller, Document Crunch

2.4 - Elements of Leadership: How Diversity, Equity, Inclusion & Belonging Generates Innovation Creativity & Revenue

Ron Bailey, NECA

2.5 - Roundtable: Adapting, Not Inventing

Jeff Elwell, E.M. Duggan Inc.
Jonathan Marsh, Steel Toe Consulting

12:00pm - 1:00pm Lunch

1:00pm - 1:45pm 3.1 - Introduction to BIM

Marcus Ebenhoeh, Dee Cramer
Jared Christman, Big State Electric

3.2 - Internal & External Software Coordination

Nathan Wood, SpectrumAEC

3.3 - Panel: Don't Go Chasing Waterfalls (Schedules), Please Stick to the Agile & Lean (Processes) That You're Used To

Jeff Sample, Join
Darren Young, UMC
Jonathan Marsh, Steel Toe Consulting

3.4 - Top Management Mistakes Contractors Make While Implementing New Technology

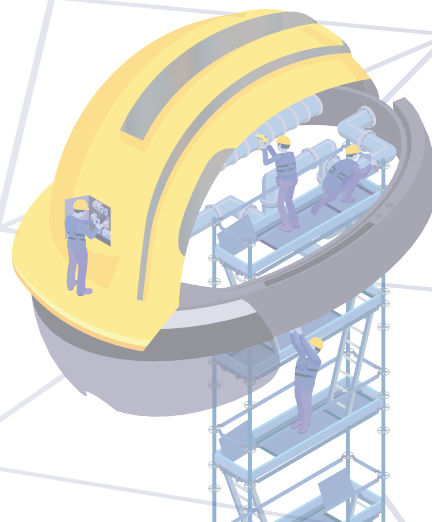
Amanda Comunale, AJC Consulting

3.5 - Roundtable: Multi-Trade Prefabrication

Bobby McCally, The Brandt Companies
Steve Rose, Rosendin

Tuesday, January 25 (continued)

2:00pm - 2:45pm	4.1 - Panel: Introduction of Fabrication	Doug Smith, DSI Kyle Holmes, The Brandt Companies Todd Grossweiler, Allison-Smith
	4.2 - Integrating Service Software Into Your Operations	Scott Berger, Arista Air Conditioning Corp. Christian Anderson, BuildOps
	4.3 - Model Based Estimating & Value Engineering	Tim Riedle, Icon Mechanical Dustin Allen, Trimble
	4.4 - Understanding the Impact of Design & Profitability for PM's	Eric Klaffka, John W. Danforth Dan Reuter, Binsky & Snyder
	4.5 - Roundtable: Eliminating Waste	Darren Young, UMC Perry Thompson, PEC Solutions Stacy Zerr, The Waldinger Company
3:00pm - 3:45pm	5.1 - Introduction to Robotic Total Stations & 3D Scanners	Bryan Williams, Trimble Tim Bodor, H.T Lyons
	5.2 - Supply Chain Management	Darren Young, UMC
	5.3 - Panel: Expanding Into New Markets	Dorin Nicorici, Dynalectric Oregon Bill Weber, Gaston Electrical Company Brian Morales, ProCal Lighting Kirk Wahlstrom, Egan
	5.4 - Panel: How to Manage Data Across Your Tech Stack	Michael Parkes, O'Connell Electric Company Sean Lazarian, ESSCO Todd Grossweiler, Allison-Smith Adam Davis, Lighthouse Electric
	5.5 - Roundtable: Recruiting & Training for BIM	Jonathan Marsh, Steel Toe Consulting
4:00pm - 5:00pm	General Session	Stacy Zerr, The Waldinger Company Joseph Lansdell, Poynter Todd Grossweiler, Allison-Smith Jake Olsen, DADO
5:30pm - 7:30pm	Off-Property Reception - Harpoon Harry's	Sponsored by Milwaukee Tool



Wednesday, January 26

8:00am - 9:00am Breakfast

9:00am - 9:45am General Session - Determine Your Prerequisites Before Implementing New Technology

Trent Leinenbach, North Mechanical Contracting
Britton Langdon, MSUITE
Todd Grossweiler, Allison-Smith

Breakout Sessions

10:00am - 10:45am 6.1 - Introduction to Building a Technology Committee

Jeff Elwell, E. M. Duggan Inc.
Todd Grossweiler, Allison-Smith

6.2 - Sheet Metal Fabrication Workflow

Joseph Lansdell, Poynter
Scott Hoffman, The Helm Group

6.3 - The Basics of Lean Construction

Perry Thompson, PEC Solutions
Henry Nutt, Southland Ind.
Carrie Struss, Milwaukee Tool

6.4 - Software Adoption is More About People Than Products

Doug Smith, DSI
Bob Snyder Jr., Binsky & Snyder
Andy Sellers, Quality Electric

6.5 - Roundtable: How to Estimate BIM Hours on Projects

Chris Weaver, Andy Egan Company
Dave Pikey, The Hill Group

Closing Session

11:00am - 12:00pm 60 Ideas on 60 Minutes

Nathan Wood, SpectrumAEC
Stacy Zerr, The Waldinger Company

Registration: \$895 per person, \$350 per spouse/guest

Limited to MCAA, MSCA, NECA, SMACNA members and their affiliated trade unions.

MCAA/MSCA Registration

NECA Registration

SMACNA Registration

